



# MONTHLY MEMBERSHIP PROGRESS REPORT

District 19 A

Results as of: 6/30/2015

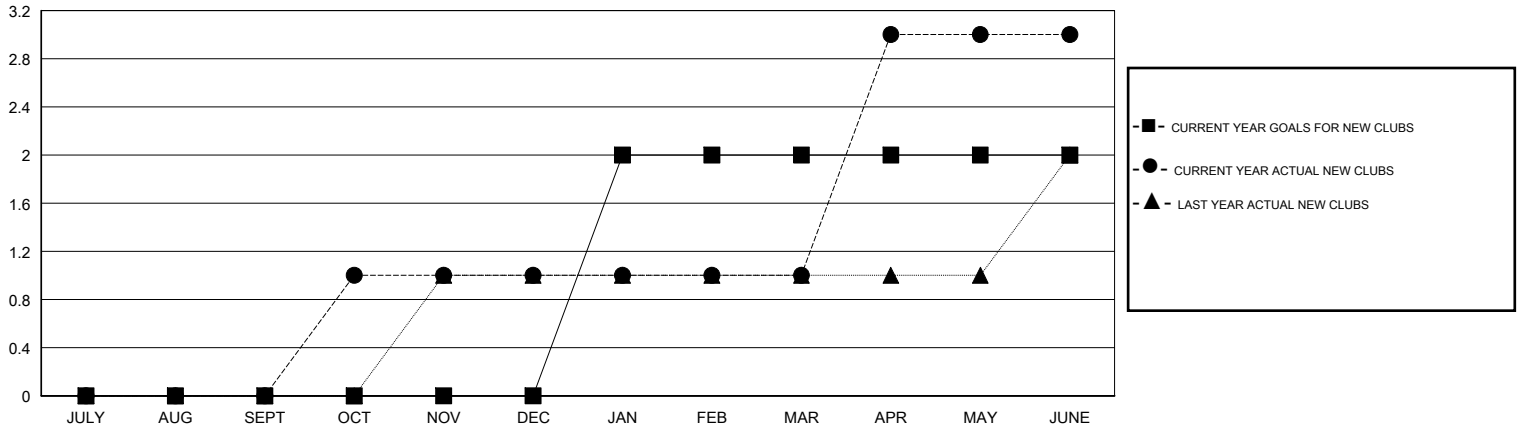
GMT: DENNIS STEVENSON

LOCATION BRITISH COLUMBIA

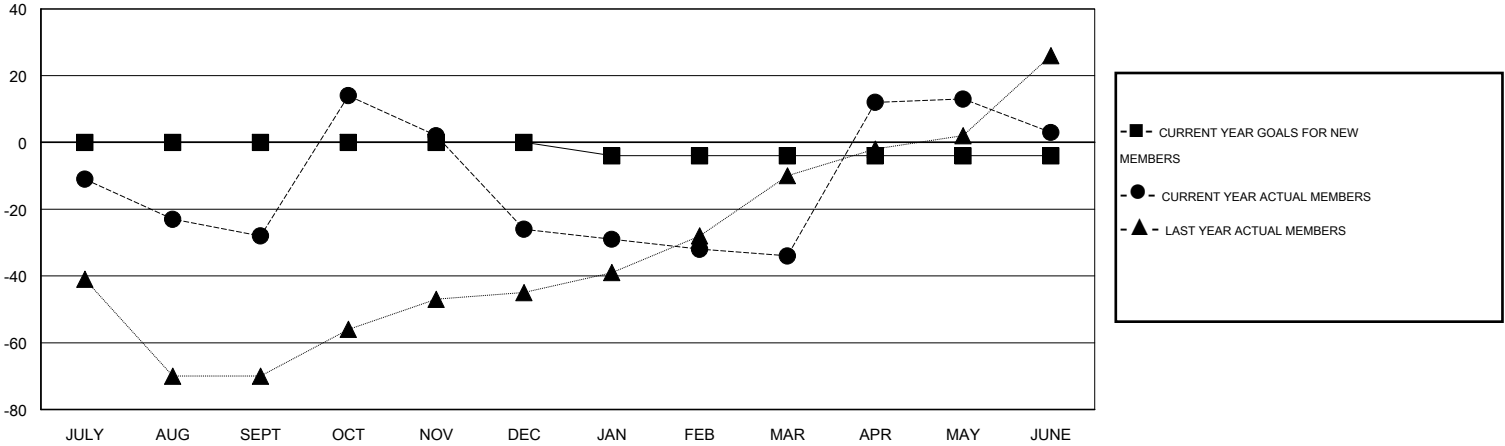
GMT CA 2

Clubs					Members				
RESULTS FOR 2014-2015					RESULTS FOR 2014-2015				
QUARTER	NEW CLUB GOAL	NEW CLUBS	DROPPED CLUBS	NET GAIN/LOSS	QUARTER	NEW MEMBER GOAL	CHARTER AND NEW MEMBERS ADDED	DROPPED MEMBERS	NET GAIN/LOSS
JULY/AUG/SEPT	0	0	0	0	JULY/AUG/SEPT	0	23	51	-28
OCT/NOV/DEC	0	1	0	1	OCT/NOV/DEC	0	73	71	2
JAN/FEB/MAR	2	0	1	-1	JAN/FEB/MAR	-4	19	27	-8
APR/MAY/JUNE	0	2	0	2	APR/MAY/JUNE	0	97	60	37

GOALS AND ACTUAL NEW CLUBS CUMULATIVE



GOALS AND ACTUAL MEMBERS CUMULATIVE



DROPPED CLUBS: 1	43 CLUBS OF 62 ADDED 1 OR MORE NEW MEMBERS	<u>GENDER DISTRIBUTION</u>	
		MALE	677 (57.52%)
<u>DROPPED MEMBERS</u>	<a href="#">CLICK HERE FOR HEALTH ASSESSMENT DATA</a>	FEMALE	500 (42.48%)
DECEASED		12	FAMILY UNIT MEMBERS
CLUB CANCELLED	0	HEAD OF HOUSEHOLD	32
OTHER	197	NON-HEAD OF HOUSEHOLD	32
<b>TOTAL</b>	<b>209</b>		